

File: 88590

Civic: 2502 Rosstown Road, Nanaimo, B.C.

Legal: Lot 32, Section 19, Range 6, Mountain District, Plan 23499.

Dimensions are in metres and are derived from Plan 23499.

This sketch does not constitute a redefinition of the legal boundaries hereon described and is not to be used in any matter which would assume same.

This sketch plan has been prepared in accordance with the Professional Reference Manual and is certified correct this 27th day of January, 2017.

  
 B.C.L.S.

This document is not valid unless originally signed and sealed or digitally signed by BCLS

© Copyright 2017 J.E. Anderson & Associates. All rights reserved. No person may copy, reproduce, transmit or alter this document in whole or in part without the consent of the signatory.

The signatory accepts no responsibility or liability for any damages that may be suffered by a third party as a result of any decision made, or actions taken based on this document.

Subject to charges, legal notations, and interests shown on: Title No. EP16863 (P.I.D. 003-106-284)

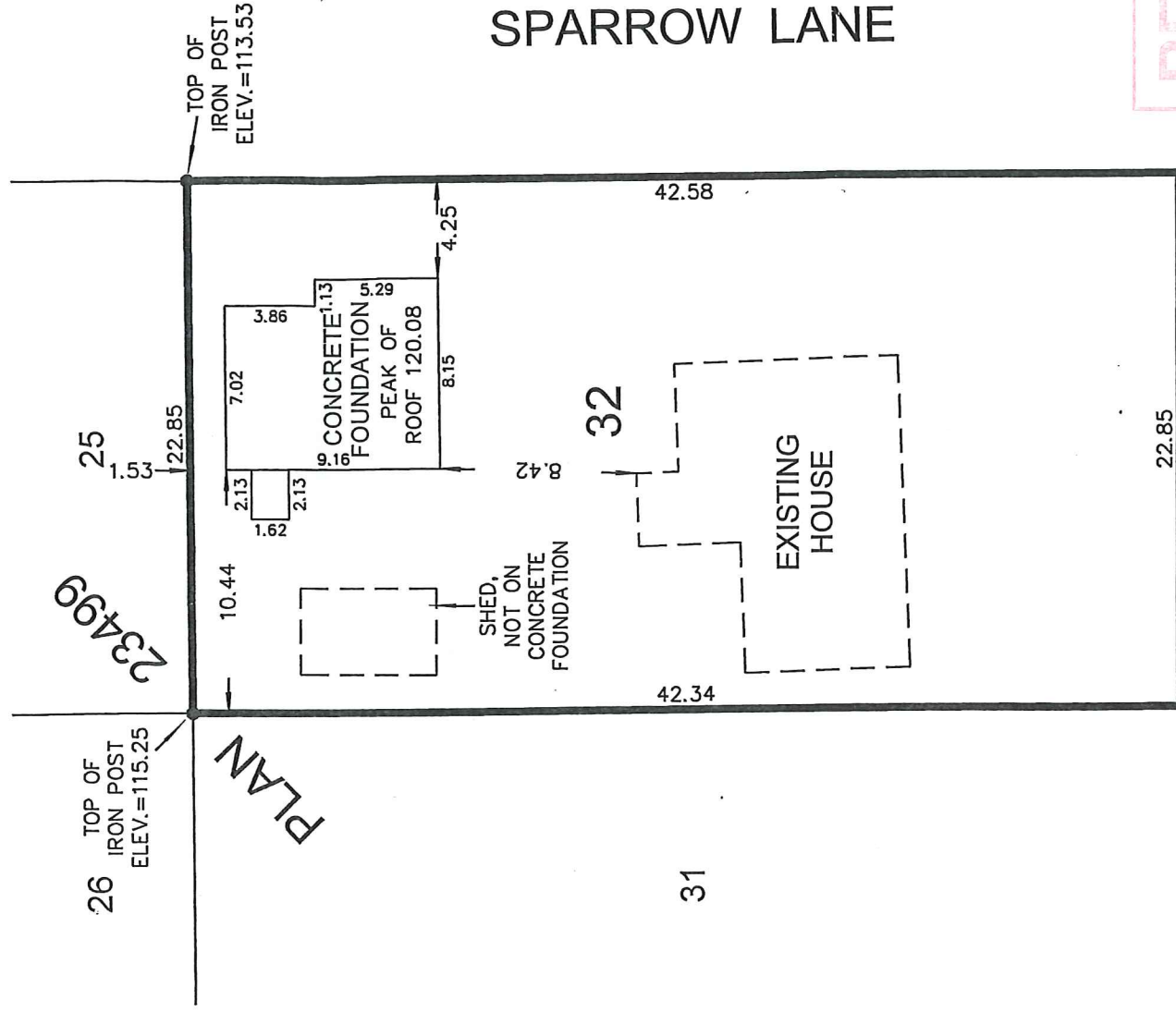
Scale 1:300



Datum for elevations, in metres, is geodetic.

Note:

This Building Location Certificate represents new construction only.



RECEIVED

MAR 23 2017

CITY OF NANAIMO  
 COMMUNITY DEVELOPMENT

ROSTOWN ROAD